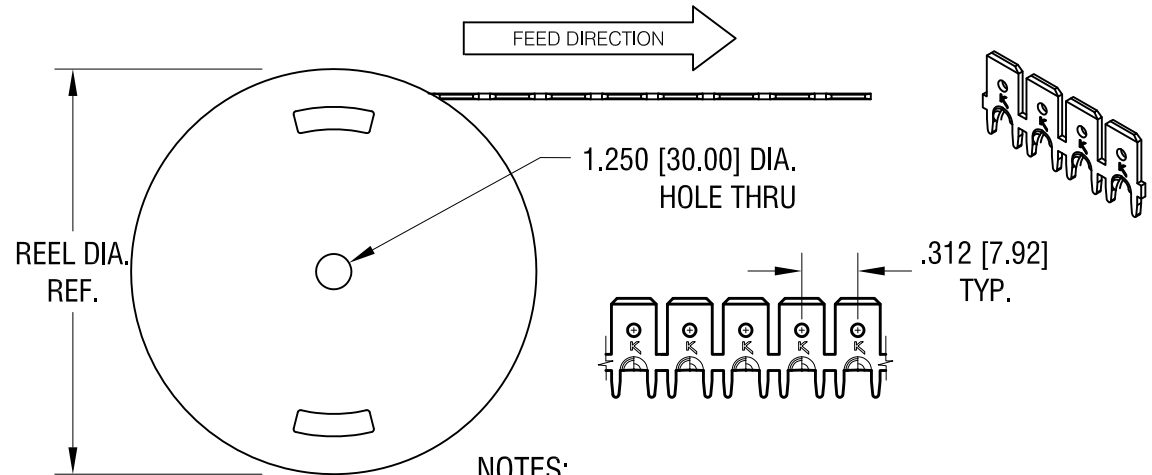
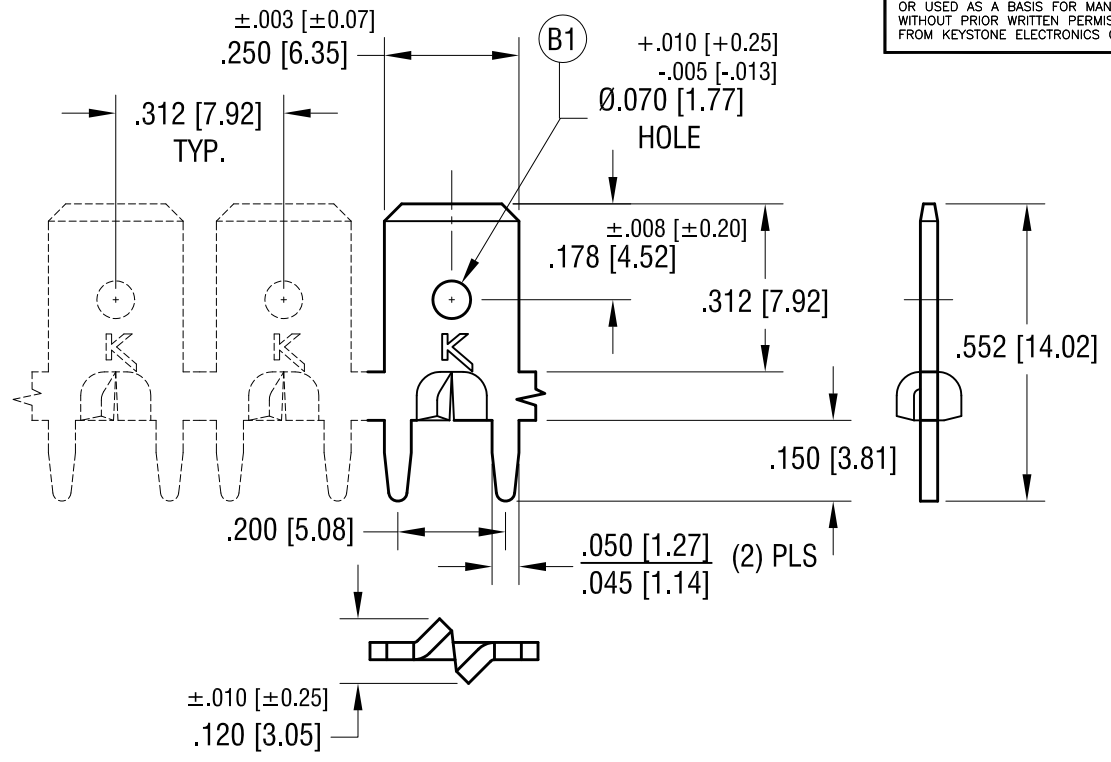


THIS DOCUMENT IS THE PROPERTY OF KEYSTONE ELECTRONICS CORP. AND SHALL NOT BE REPRODUCED, DISTRIBUTED OR USED AS A BASIS FOR MANUFACTURE WITHOUT PRIOR WRITTEN PERMISSION FROM KEYSTONE ELECTRONICS CORP.



NOTES:

REEL SPECIFICATIONS:

- 1. REEL: CARDBOARD
- 24.0 [609.2] DIA. 10,000 PIECES PER CONTINUOUS REEL.

TERMINAL SPECIFICATIONS:

- 1. MAT'L- .032 [0.81] BRASS
- 2. FINISH: MATTE TIN PLATE.

10.13.21	(B1) WAS Ø.070 [1.77]±.005 CHANGE AS PER ECN 21-112	B
9.03.21	WAS 15,000 PCS PER CARDBOARD CHANGE AS PER ECN 21-101	A
DATE	DESCRIPTION	REV.

KEYSTONE ELECTRONICS CORP.			
www.keyelco.com • NEW HYDE PARK, NY 11040 • Tel (516) 328-7500			
PART NAME PC QUICK FIT TERMINAL - CONTINUOUS REEL			
MATERIAL AS NOTED			
FINISH AS NOTED		DRN BY NT	DATE 9.17.18
		APP'D RH	SCALE 3X, 1X
TOLERANCES DECIMAL ANGULAR	INCH [MM] ± .005 [± 0.13] ± 1°	CODE C	DWG NO. 1287-STR
UNLESS OTHERWISE SPECIFIED			